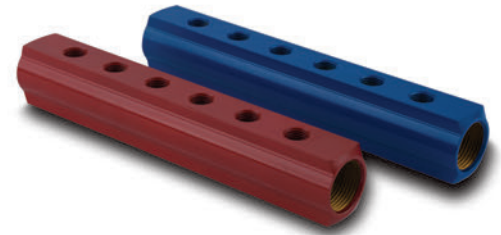


COUPLINGS, MULTICOUPLINGS & MOULD COOLING PRODUCTS

KUPPLUNGEN, MULTIKUPPLUNGEN & KÜHLUNGSELEMENTE FÜR WERKZEUGE

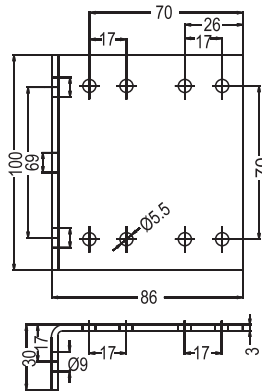
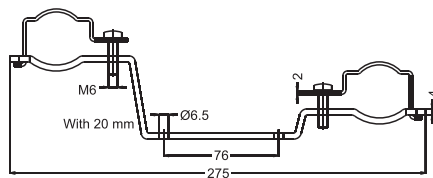
SERIE 117



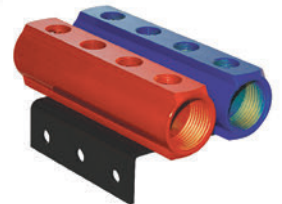
Order No / Bestellnr.: 117K-LP-33



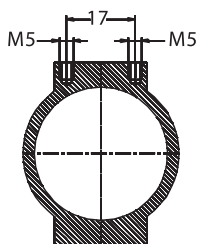
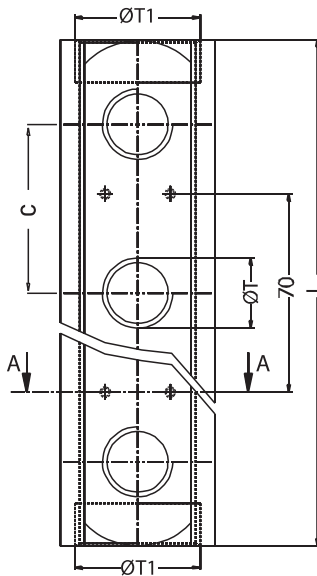
Collectors Assembling Clamps (1")
Montage Klemmen für Kollektor (1")



Order No / Bestellnr.: 117K-BS-70



Also Aluminium Collector 1.1/4" & 1.1/2" available
Auch Aluminiumkollektor 1.1/4" & 1.1/2" verfügbar



ØT = 1/4"					ØT = 3/4"					ØT = 3/8"					ØT = 3/4"				
No of exits	Order No	L	C	L1	No of exits	Order No	L	C	L1	No of exits	Order No	L	C	L1	No of exits	Order No	L	C	L1
3	117K-03-13/26	120	30	70	4	117K-04-13/26	150	30	70	4	117K-04-17/26	165	35	70	5	117K-05-17/26	200	35	70
4	117K-04-13/26	150	30	70	5	117K-05-13/26	180	30	70	6	117K-06-17/26	235	35	70	8	117K-08-17/26	305	35	70
5	117K-05-13/26	180	30	70	6	117K-06-13/26	210	30	70	8	117K-08-17/26	305	35	70	10	117K-10-17/26	375	35	70
6	117K-06-13/26	210	30	70	7	117K-07-13/26	240	30	70	10	117K-10-17/26	375	35	70	12	117K-12-17/26	445	35	70
7	117K-07-13/26	240	30	70	8	117K-08-13/26	270	30	70										
8	117K-08-13/26	270	30	70	9	117K-09-13/26	300	30	70										
9	117K-09-13/26	300	30	70	10	117K-10-13/26	330	30	70										
10	117K-10-13/26	330	30	70	11	117K-11-13/26	360	30	70										
11	117K-11-13/26	360	30	70															

ØT = 3/8"					ØT = 1"					ØT = 1/2"					ØT = 1"				
No of exits	Order No	L	C	L1	No of exits	Order No	L	C	L1	No of exits	Order No	L	C	L1	No of exits	Order No	L	C	L1
4	117K-04-17/33	165	35	70	4	117K-04-21/33	210	50	70	4	117K-04-21/42	226	50	70	5	117K-05-21/42	326	50	70
5	117K-05-17/33	200	35	70	5	117K-05-17/33	200	35	70	5	117K-05-21/33	260	50	70	6	117K-06-21/42	426	50	70
6	117K-06-17/33	235	35	70	6	117K-06-17/33	235	35	70	6	117K-06-21/33	310	50	70	8	117K-08-21/42	526	50	70
8	117K-08-17/33	305	35	70	8	117K-08-17/33	305	35	70	8	117K-08-21/33	410	50	70	10	117K-10-21/42	626	50	70
10	117K-10-17/33	375	35	70	10	117K-10-17/33	375	35	70	10	117K-10-21/33	510	50	70	12	117K-12-21/42	826	50	70
12	117K-12-17/33	445	35	70	12	117K-12-17/33	445	35	70	12	117K-12-21/33	610	50	70					

ØT = 3/8"					ØT = 1.1/4"					ØT = 1/2"					ØT = 1.1/4"				
No of exits	Order No	L	C	L1	No of exits	Order No	L	C	L1	No of exits	Order No	L	C	L1	No of exits	Order No	L	C	L1
4	117K-04-17/42	196	40	70	4	117K-04-17/42	196	40	70	4	117K-04-21/42	226	50	70	5	117K-05-21/42	326	50	70
5	117K-05-17/42	236	40	70	5	117K-05-17/42	236	40	70	5	117K-05-21/33	260	50	70	6	117K-06-21/42	426	50	70
6	117K-06-17/42	276	40	70	6	117K-06-17/42	276	40	70	6	117K-06-21/42	426	50	70	8	117K-08-21/42	526	50	70
8	117K-08-17/42	356	40	70	8	117K-08-17/42	356	40	70	8	117K-08-21/42	526	50	70	10	117K-10-21/42	626	50	70
10	117K-10-17/42	436	40	70	10	117K-10-17/42	436	40	70	10	117K-10-21/42	626	50	70	12	117K-12-21/42	826	50	70
12	117K-12-17/42	516	40	70	12	117K-12-17/42	516	40	70	12	117K-12-21/42	826	50	70					
16	117K-16-17/42	676	40	70															

Example

117K-04-17/42 R (red)
117K-04-17/42 B (blue)